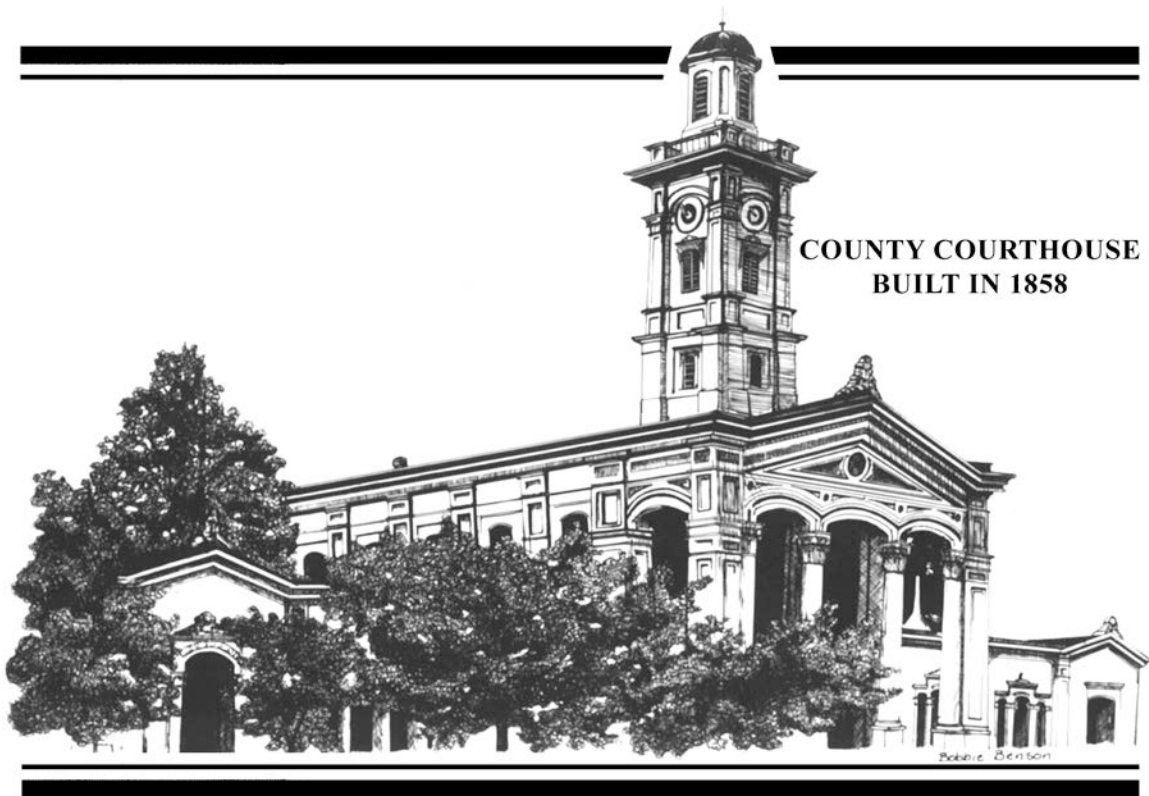


ROSS COUNTY COURT OF COMMON PLEAS
PROBATE-JUVENILE DIVISIONS
2 N. PAINT STREET, SUITE A
CHILLICOTHE, OHIO 45601
(740) 774-1177/774-1179

2015 ANNUAL REPORT



J. Jeffrey Benson, Judge

Ross County Commissioners and Citizens of Ross County:

Attached please find the Annual Report of the Ross County Probate/Juvenile Court. We continue to strive to be staffed and structured in a manner that will best serve the needs of every citizen of Ross County. This Court is very aware of the new, evolving and serious issues facing our families and children as well as the changes in Ohio law designed to best address those issues. We acknowledge that what worked in the past may not necessarily work in the future. We will continue to budget/ utilize our resources, prioritize our services, and promote coordination of efforts among the other Ross County Courts and our support agencies.

The information set forth in the Annual Report is intended to document the increased demands upon and services provided by the Ross County Probate/Juvenile Court. Thank you in advance for your continued cooperation and support.

J. Jeffrey Benson

J. Jeffrey Benson
Ross County Court of Common Pleas
Probate and Juvenile Divisions

PROBATE DIVISION

THE RECORDS OF THE PROBATE COURT OF ROSS COUNTY, OHIO PRE-
DATE THE ESTABLISHMENT OF THE STATE OF OHIO IN 1803

INTRODUCTION TO THE PROBATE DIVISION

The Probate Division of the Court of Common Pleas has jurisdiction concerning estates of deceased persons and of incompetent persons and minor persons, adoptions, trusts, mental illness proceedings, marriage licenses, civil actions, and various miscellaneous matters touching on inheritance and family law, other than divorce and dissolution.

There were 1,145 probate court cases filed in 2015. This is a .09% increase from 2014 when there were 1,144 probate court cases filed.

CASE FILINGS

■ Estates

The Probate Division of the Court of Common Pleas of Ross County, Ohio, reports that:

- 352 new estate cases were filed for the year 2015, which includes twenty-four (24) cases that were reopened cases.
- 227 estate cases pending at the end of 2014.
- In 2015, there were 366 terminations or closings, leaving 213 estates pending at the end of the year.

■ Guardianships

There were 47 new guardianships filed in 2015.

- Thirty-four (34) were guardianships of an incompetent person. There were 302 incompetent guardianships pending at the end of 2014. Forty-two (42) incompetent guardianships were terminated in 2015 leaving 294 incompetent guardianships pending at the end of 2015.
- Thirteen (13) of the guardianship cases were guardianships of minors. There were 104 guardianships pending at the end of 2014. Twenty-

three guardianships were terminated in 2015 leaving 94 guardianships pending at the end of 2015.

■ **Trusts**

In 2015, there were 2 new trusts filed.

- At the end of 2014, there were 43 cases pending. During 2015, two (2) cases were terminated, leaving a caseload of forty-three (43) trust cases pending at the end of the year.

■ **Civil Actions**

There were 27 new civil actions filed in 2015.

- At the end of 2014, there were 16 civil actions pending. In 2015, twenty-two (22) cases were terminated leaving 21 civil actions pending at the end of the year.

■ **Adoptions**

Sixteen (16) new adoptions were filed in the year 2015.

- Six (6) were adoptions by individuals or Agencies.
- Eight (8) were step-parent adoptions.
- Two (2) were adult adoptions.
- There were no foreign adoptions.
- Fourteen (14) adoptions were completed.
- Eight (8) adoptions remain pending on the adoption docket.

■ **Mental Illness**

In the year 2015, fifty-seven (57) mental illness cases were filed and 57 cases were terminated in this Court.

- Seventeen (17) for the Veteran's Administration Medical Center
- Twenty-five (25) for Adena Regional Hospital
- Fourteen (14) for the Scioto Paint Valley Mental Health Center
- One (1) was out of county cases.

■ **Minor Settlement**

Eight (8) new applications for approval to settle injuries to minors were filed in the year 2015.

- One (1) case was pending at the end of 2014.
- Six (6) cases were terminated in 2015 leaving three (3) cases pending at the end of the year.

■ **Birth Registrations**

There were no delayed birth registration filed in 2015.

■ **Birth Corrections**

There were four (4) applications for birth correction filed in 2015 .

■ **Change of Name**

There were forty-two (42) change of name applications filed in 2015.

- Twenty-five (25) applications were for the change of name of an adult
- Seventeen (17) applications were for the change of name of a minor
- Thirty-five (35) changes of name cases were closed in 2015 leaving 10 cases pending at the end of the year.

■ **Marriage License**

In 2015, five hundred twenty-one (521) marriage licenses were issued.

■ **Other**

In 2015, there were sixty-nine (69) additional probate filings.

- Five (5) applications for disinterment
- Sixteen (16) INRE filing
- One (1) notice of unauthorized monies
- Forty-seven (47) were wills placed on deposit with the Court for safekeeping.

PROBATE FINANCES

\$100,512.22 in court costs was paid in the Probate Division in 2015.

\$343,719.22 was expended in the Probate Division in 2015.

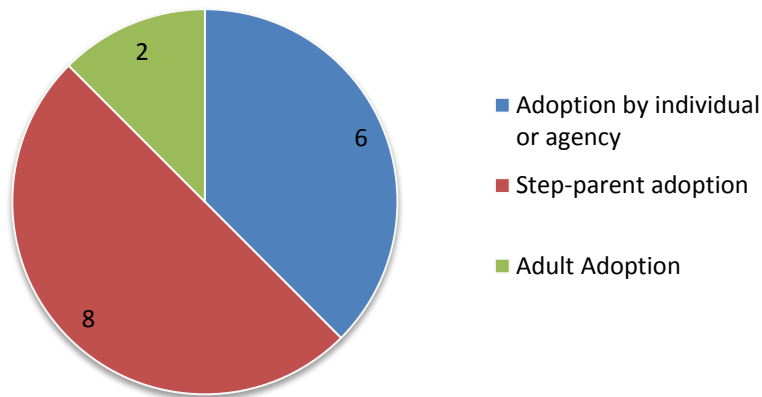
All pending litigation is current.

PROBATE CASE COMPARISONS

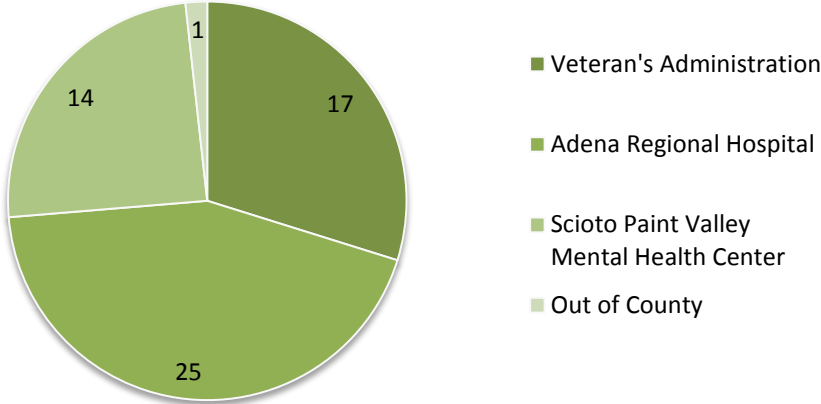
Probate Case Table

Year	2008	2009	2010	2011	2012	2013	2014	2015
Estates	404	374	380	409	444	416	330	352
Trusts & Guardianships	59	60	50	59	45	57	75	49
Civil Actions	9	11	13	15	10	22	21	27
Adoptions	29	45	25	39	41	23	33	16
Mental Illness	51	73	65	55	52	57	88	57
Others	615	582	584	622	554	591	597	644
Total	1167	1145	1117	1199	1146	1166	1144	1145

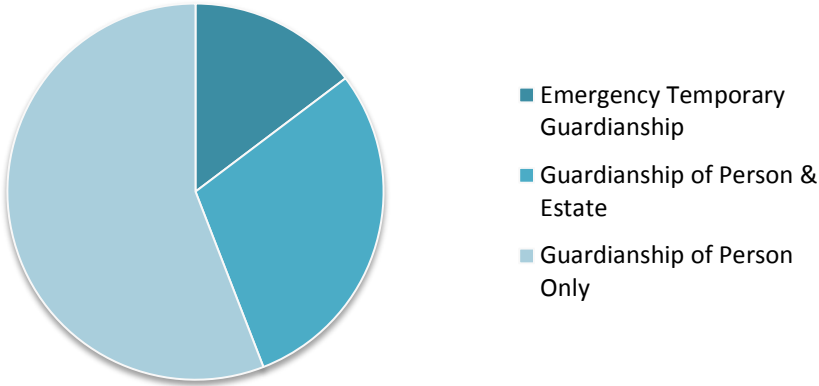
Adoptions



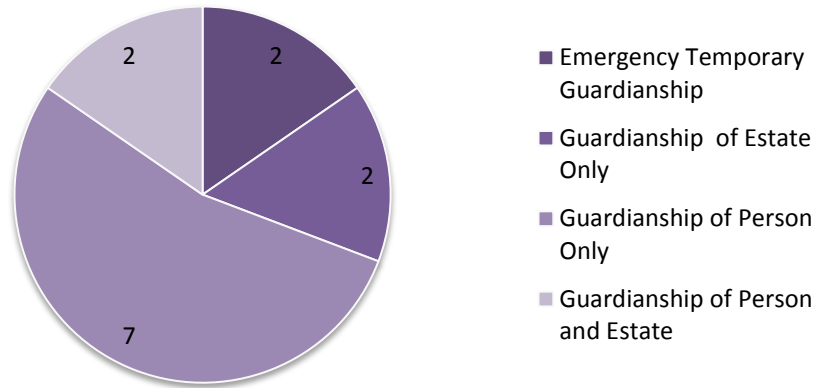
Agencies who filed Mental Illness Cases



Guardianship of Incompetent Persons Case Type Breakdown



Guardianship of a Minor Case Type Breakdown



JUVENILE DIVISION

INTRODUCTION TO THE JUVENILE DIVISION

The Juvenile Division of the Court of Common Pleas has jurisdiction concerning juveniles, including: delinquency, unruly, school truancy, juvenile traffic offender, alternative school assignments, dependency, neglect, abuse, and other juvenile matters. This division also has jurisdiction concerning adults: custody, paternity, child support, visitation, and contributing to the delinquent and/or unruliness of a minor. The Juvenile Division also has jurisdiction concerning adults in regards to school truancy matters: Failure to cause and compel the child under their charge to attend school regular in accordance with law, and aiding and abet to the unruliness of the minor by failing to cause the child under their charge to attend school in accordance with law.

There were 1,404 juvenile court cases filed in 2015. This is a 5.2% decrease from 2014 when there were 1,477 cases filed.

CASE FILINGS

■ Delinquent

There were 304 delinquent cases filed in 2015. Of these filings, there were 401 charges filed.

- A delinquent child is a child who commits a violation that would be a crime if committed by an adult.
- BIND OVER – A bind over is a delinquent case in which the State files a motion to transfer jurisdiction of the case to the General Division of Ross County, Ohio to try the juvenile as an adult. In 2015, there was one motion for bind over/motion for discretionary transfer filed.
- Of the 401 charges, eighty-one (81) were felonies in which:
 - Twenty-nine (29) were adjudicated
 - Twenty-four (24) were dismissed
 - Three (3) were reduced to a misdemeanor
 - One (1) was reduced to a lower felony
 - Nine (9) were transferred
 - Nineteen (19) are pending

■ Unruly

In 2015, there were seventy (70) unruly cases filed.

- Unruly cases include school tardy, school truancy, curfew, home truancy and unruly behavior. An unruly child is defined as any child who fails to submit themselves to the reasonable control of their parents, teachers, school officials, guardians, or custodians.
- First time unruly and school truancy offenders are diverted to mediation and chronic school truants are filed as delinquent complaints.

■ Adult

There were seventy-seven (77) adult cases filed in 2015.

- Of these adult case filings, there was no charges filed for contributing to the unruliness/delinquency of a minor.
- Seventy-one (71) cases filed were for cause and compel.
 - Cause and compel charges are related to a parent(s) or custodian(s) not causing the child under their charge to attend school in accordance with the law.

- There were six (6) cases filed for parent educational neglect or failure to attend parenting classes.
 - In late 2000, the Court and the surrounding school systems, county and city, adopted a new school truancy program, which will change how juvenile and adult charges are filed in truancy complaints. The new law passed by the State gives stricter penalties for parents/custodians who fail to send their child/or child under their charge to attend school and also for the children themselves.

▪ Traffic

In 2015, three hundred thirty-eight (338) traffic citations were filed against juveniles.

- Of those citations, there were three hundred seventy-five (375) charges filed.

▪ Dependent, Neglect, Abuse

In 2015, there were three hundred sixteen (316) dependent, neglect and abuse cases filed. This is a **30.04% increase** in filings from 2014, in which there were 243 cases filed.

- Of those 316 cases, thirty-one (31) were for abuse.
 - An abused child is one who is a victim of physical or sexual abuse.
 - Two (2) were for sexual abuse
 - Five (5) were for physical abuse
 - Twenty-two (22) were for babies born with positive drug tests
 - Drugs included: buprenorphine, benzodiazepines, cocaine, opiates, benzoglycogonine, nordiazepam, oxycodone, Percocet, butalbital, suboxone, morphine, amphetamines, methamphetamines, marijuana, gabapentin, heroin, and fentanyl.
 - Two (2) were amended to a dependency
- Two (2) were for neglect
 - A neglected child is a child who lacks proper parental care due to the faults or habits of their parents, guardians, or custodians.
- Two hundred eighty-three (283) were dependent filings.
 - A dependent child is a child who lacks proper care, through no fault of his parents, guardians, or custodians.

In 2015, parents of dependent, neglect and abused children were reportedly using the following drugs: Adderall, alcohol, amphetamines, benzodiazepines, benzoglycogonine, buprenorphine,

butalbital, clonidine, cocaine, crack cocaine, diazepam (valium), fentanyl, flexural, gabapentin, heroin, hydromorphone, liquid marijuana, marijuana, methamphetamines, “Molly”, morphine, Neurontin, “nerve pills”, nicotine, nordiaxepam, opiates, oxycodone, percocets, soma, suboxone, subutex, vicoden, vivitrol, Xanax & Zoloft.

▪ **Paternity Child Support, Visitation, Custody**

In 2015, one hundred eighty-three (183) cases were filed regarding paternity, child support, visitation and custody.

- There were eleven (11) paternity proceedings.
 - Paternity cases establish the parent/child relationship for children born of unwed parents.
- Ninety (90) were child support cases.
- Eighty-two (82) were custody/visitation cases.

▪ **Grandparent Power of Attorney/Child Caretaker Authorization Affidavit**

Description: House Bill 130 creates two ways for grandparents to obtain “care, physical custody, and control” over grandchildren *without changing legal custody*: 1) Power of Attorney (POA) completed by parent(s), a custodian, or a guardian of a child; and 2) Child Caretaker Authorization Affidavit (CAA), created by the grandparent when the child’s parent(s), guardian, or custodian cannot be located. The documents must be properly signed and notarized. They are valid for one year, unless terminated earlier as specified in the bill. They may be renewed after one year, subject to court review.

- In 2015, there were twenty-four (24) grandparent power of attorney/child caretaker authorization affidavits filed.

▪ **Marriage Consent**

There were four (4) marriage consents filed in 2015.

▪ **Juvenile Civil Protection Order**

Amended Substitute House Bill 10 authorized juvenile courts to issue and enforce civil protection orders against juveniles who commit certain offenses of violence, aggravated trespass, sexually oriented offenses, or domestic violence regardless of the familial relationship between the parties.

- There were two (2) filings for juvenile protections orders. Both filings were for juvenile civil protection orders. Both filings were granted.

▪ **Miscellaneous Cases**

- Nine (9) INRE cases were filed.
- Seventy (70) assignments to Paint Creek Youth Center (Lighthouse) were filed.
- Seven (7) parental agreements were filed.
- No permanent surrender cases were filed.

JUVENILE FINANCES

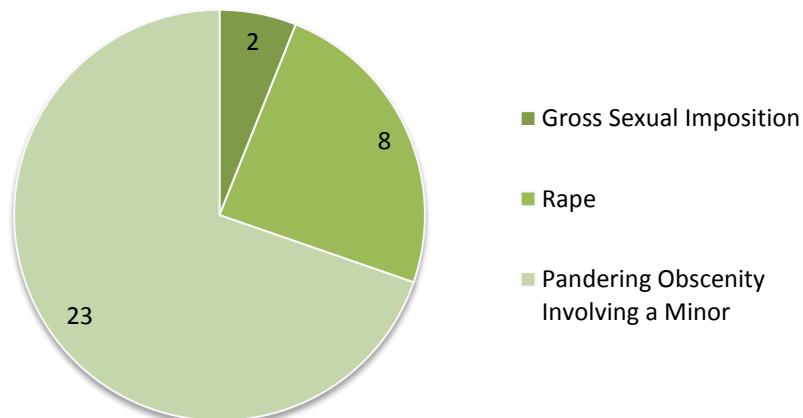
\$72,679.31, in court costs, was paid in the Juvenile Division in 2015

\$500,267.80 was expended in the Juvenile Division in 2015.

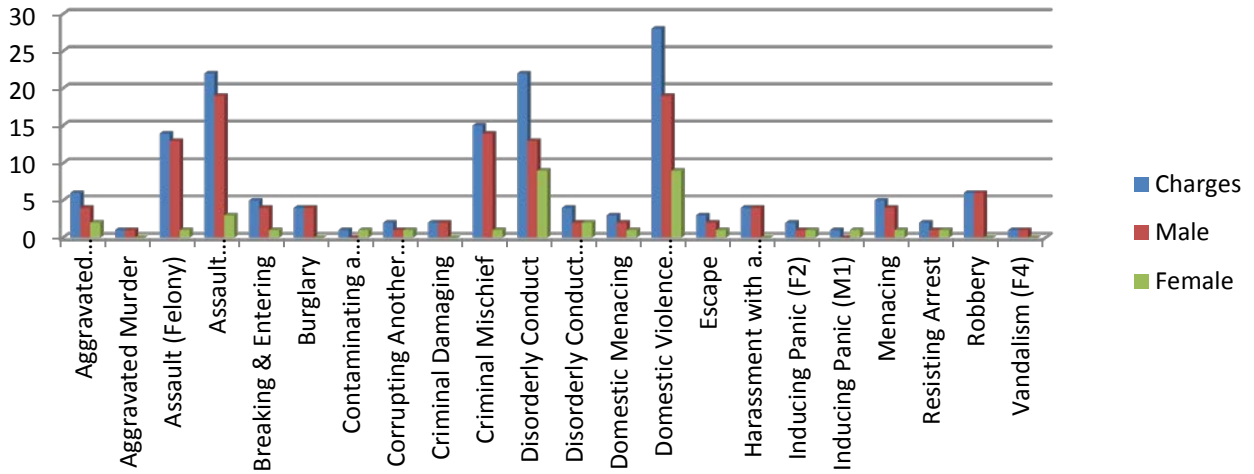
JUVENILE CASE COMPARISONS

Year	2010	2011	2012	2013	2014	2015
Delinquent (cases not charges)	421	458	311	321	338	304
Unruly	81	79	43	46	66	70
Traffic (cases not charges)	355	355	306	267	264	338
Dependent/Neglect/Abuse	176	250	192	257	243	316
Adult	79	75	113	123	120	77
Paternity/Custody/Child Support	238	270	214	215	186	183
Total	1350	1487	1089	1229	1217	1288

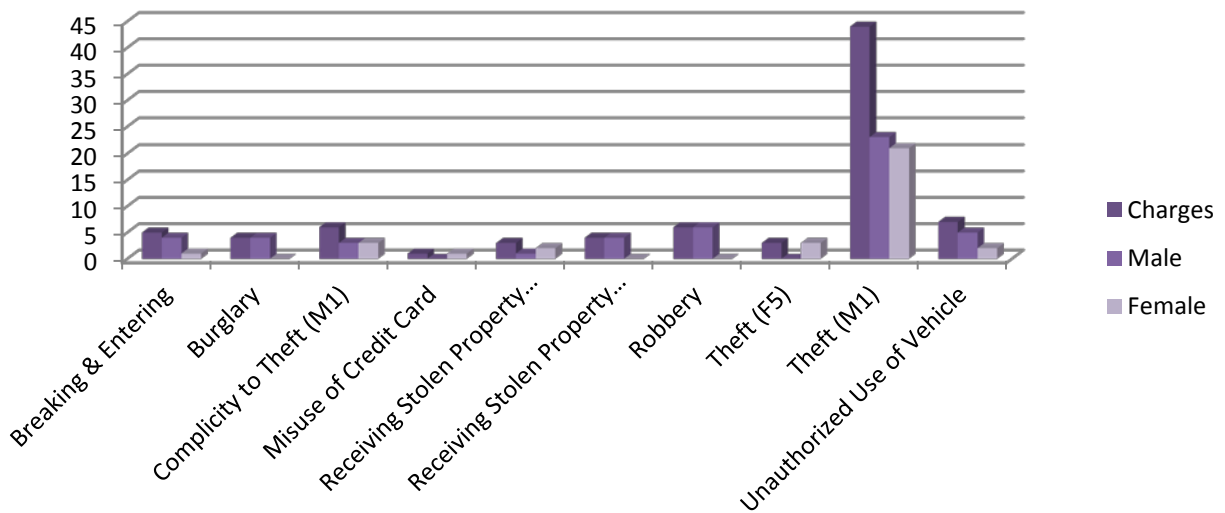
Juvenile Sex Related Charges Filed



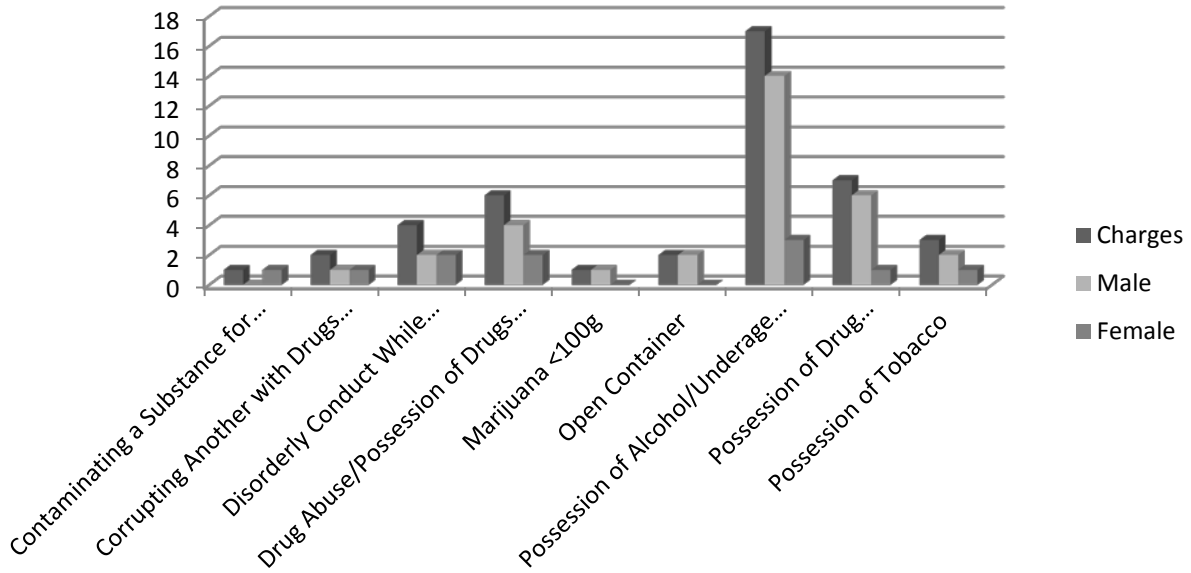
Juvenile Offenses of Violence Excluding Sex Related Offenses w/Male-Female Ratios



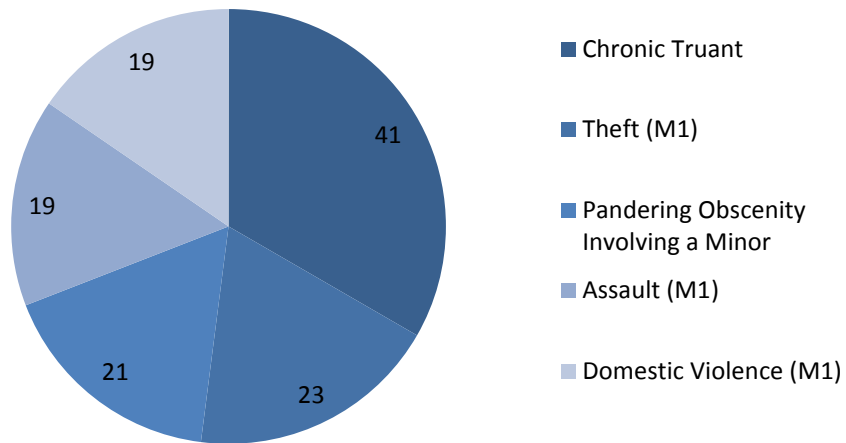
Juvenile Theft Related Charges w/Male-Female Ratios



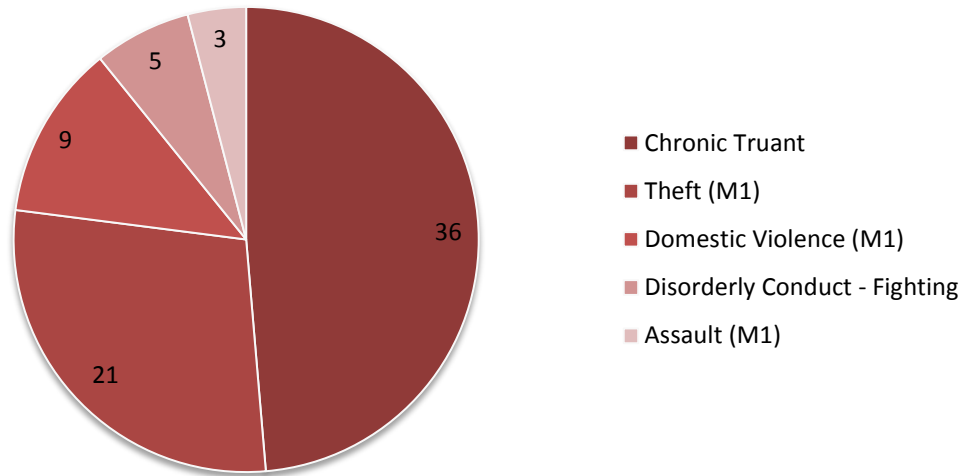
Juvenile Drug/Alcohol Related Charges w/Male-Female Ratios



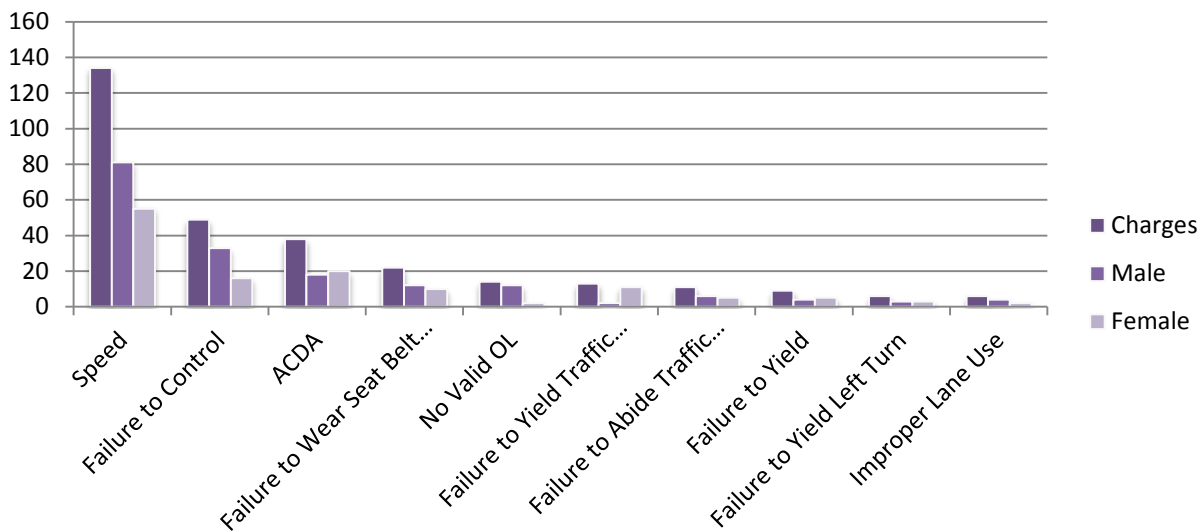
Top 5 Male Delinquent Charges



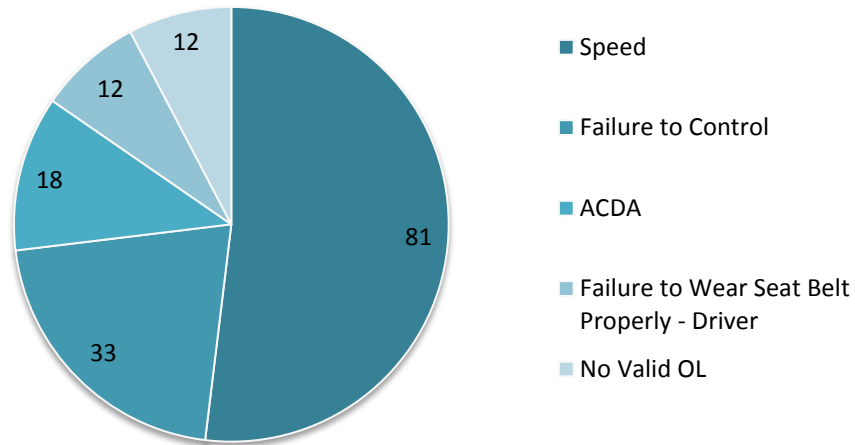
Top 5 Female Delinquent Charges



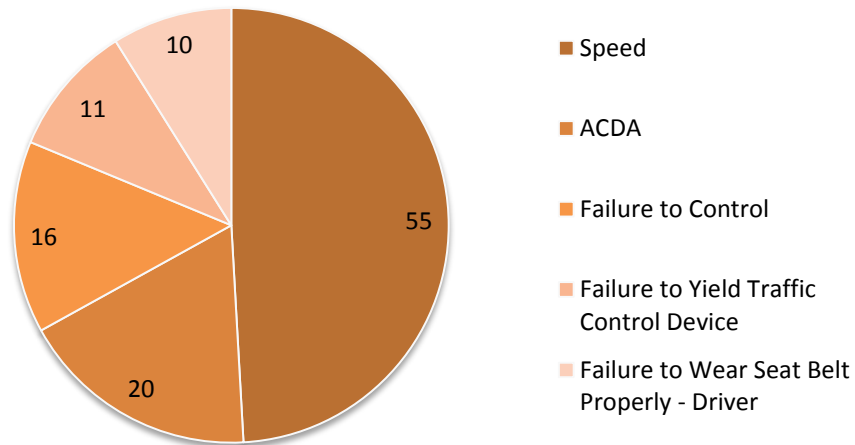
Top 10 Juvenile Traffic Charges w/Male-Female ratios



Top 5 Male Juvenile Traffic Charges

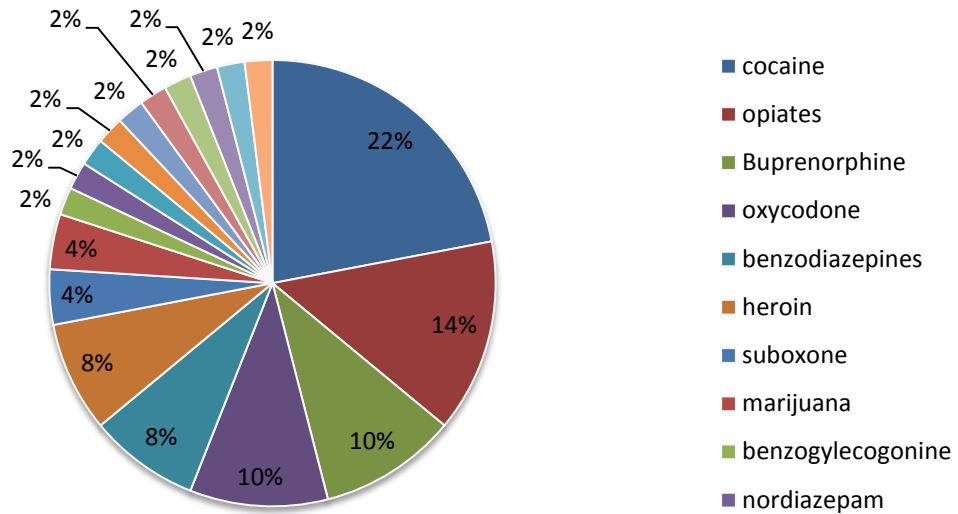


Top 5 Female Juvenile Traffic Charges

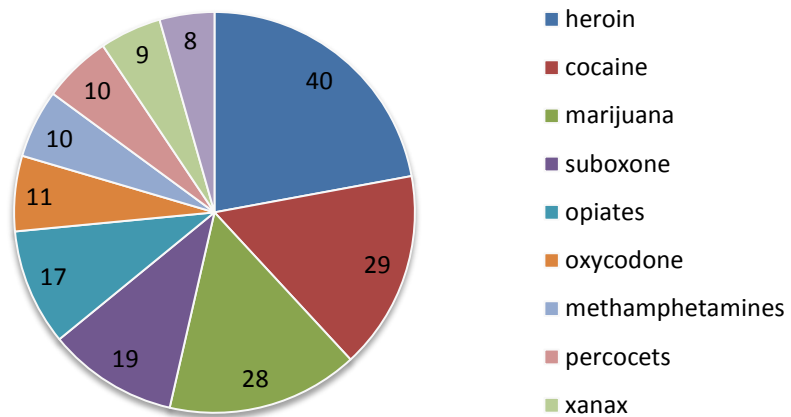


NOTE: The average miles per hour over the posted speed limit for juveniles cited in Ross County for the year 2015 was 16.62. An decrease from 2014 when the average was 17.68 and from 2013 when the average was 17.26.

Babies born with drugs in their system



Top 10 Reported Drugs used by parents in 2015 Abuse/Dependency Neglect Cases



JUVENILE PROBATION DEPARTMENT

INTRODUCTION TO THE JUVENILE PROBATION DEPARTMENT

The Juvenile Probation Department of the Court of Common Pleas monitors juveniles and adults placed on probation through the Juvenile Court of Ross County. The Juvenile Probation Department also:

- prepares and files monthly reports for the individuals on probation;
- prepares and files reports and memos ordered by the Juvenile Court;
- finds residential placements and non-residential treatment programs for juveniles with alcohol and drug abuse problems;
- monitors the probationer's school attendance;
- assigns community service worksites and monitors the juvenile's performance;
- assigns juveniles placed in the RESCUE program worksites; and
- takes payments for restitution.

The Juvenile Probation Department further administers drug tests and monitors children placed on electronic monitoring; and various other duties as directed by the Juvenile Court.

JUVENILE PROBATION DEPARTMENT CASE LOAD

▪ Probationers

The Juvenile Probation Department began 2015 with thirty-four (34) probationers and received sixty (60) new probationers.

- Forty-six (46) probations were terminated during the year.
- Leaving forty-eight (48) probationers for 2016.
- Of the sixty (60) juveniles placed on probation in 2015:
 - Twenty-nine (29) resided within the city of Chillicothe.
 - Thirty-one (31) resided in the county.
 - Forty-five (45) were Caucasian.

- Fifteen (15) were non-Caucasian.
- Nineteen (19) were female.
- Forty-one (41) were male.

▪ **Restitution & RESCUE funds**

In 2015, restitution paid to victims of crimes amounted to \$1,620.97.

RESCUE is a work program to assist juveniles in completing their restitution obligation.

- The child is assigned a work site in which the child receives a paycheck.
- However, the monies are paid to the Court and not to the child.
- The Court then deducts 65% of the child's pay and forwards this amount to the victim and of the remaining 35% the Court deducts poundage and then forwards to the child the balance of the monies.

In 2015, \$1,854.60 was paid to victims of crimes through the RESCUE program.

Total paid to victims in 2015 through restitution and RESCUE is \$3,475.57.

▪ **DRUG TEST**

The Juvenile Probation Department and IV-E Department completed ninety-eight (98) juvenile drug tests in 2015. Thirty-four (34) of the tests had positive results and sixty-four (64) had negative results. Positive drug tests included THC, benzodiazepines, amphetamines and opiates.

Fourteen (14) adult drug tests were completed in 2015. Three (3) of the tests had positive results, nine (9) had negative results and two (2) the results were unknown. Positive drug tests were all for THC.

The Juvenile Probation Department also provides drug test kits to the Ross County Job and Family Services – Children's Division for testing on juveniles in their care. Results for those test kits are kept with that Agency.

- A five-drug panel test kit costs \$7.90 per urine test kit.
- The drug test costs are paid with monies received by the Court from the RECLAIM Ohio grant provided through the Ohio Department of Youth Services.
- July 2012, the Court initialized the additional use of synthetic testing at the cost of \$7.00 per test.

▪ **Electronic Monitoring**

In 2015, the Juvenile Probation Department had a total of eleven (11) youth placed on electronic monitoring. The cost of electronic monitoring was \$17.00 per day.

The use of electronic monitoring is an effective tool for the probation department and is more cost effective than alternative costs such as the per diem rate of \$111.00 for the Ohio Department of Youth Services, the per diem rate of \$74.00 for the Hocking Valley Community Residential Center, and a varied per diem rate at the Juvenile Detention Center (a non-member rate is \$85.00 per day).

■ Department of Youth Services

In 2015, two (2) juveniles were committed to the custody of the Ohio Department of Youth Services. Commitment to the Department of Youth Services is only for felony offenders. Both were new commitments.

- All were male.
- All were caucasian.

JUVENILE PROBATION DEPARTMENT FINANCES

\$253,491.30 was expended in the Juvenile Probation Department in 2015.

Introduction to Court Alternative Programs

Juvenile court has had a high degree of involvement and interest in community programs and collaborative ventures that support youth and families. The court has initiated diversion programs and fostered alternative strategies to divert youth from court sanctions and out of home placements. With dwindling budgets and increased pressures to serve unruly and delinquent youth the court has identified alternative resources to administer justice, rehabilitate juveniles, promote public safety and provide opportunities to strengthen families.

Mediation

INTRODUCTION TO MEDIATION

In 2015, the Mediator was assigned two hundred two (202) cases. Of those cases, there were:

- Forty-three (43) delinquency cases

- Forty-five (45) unruly cases
- Ten (10) child support cases
- Three (3) adult cases
- Eight-five (85) school truancy cases
- Four (4) abuse cases
- Seven (7) paternity cases, and
- Thirteen (13) dependency cases

In 2015, \$4,103.96 was paid in the the mediation/diversion fund.

IV-E Program

Introduction to the IV-E Program

The IV-E Division is a program in Ross County Court of Common Pleas, Juvenile Division certified under the guidelines set forth by Ohio Department of Job and Family Services. As a Title IV-E entity Juvenile Court is eligible for and has received Federal Financial Participation reimbursement. This is a juvenile justice entitlement program that reimburses a percentage of the local costs for services to unruly and delinquent youth. In 2015, the Juvenile Court received \$308,857 in federal reimbursement. Approximately \$77,214 (25%) of the juvenile court reimbursement is disbursed to the Ross County Commissioners. The remaining juvenile court funds are used to enhance juvenile justice services in our community.

The juvenile court IV-E staff assesses youth for community risk, level of care and broker a range of services for youth and families. When necessary the IV-E program will assume care and custody of unruly and delinquent youth and ensure education, comprehensive mental and behavioral health intervention services, and treatment are provided to youth and families to promote family preservation. IV-E staff also:

- Monitor service delivery in accordance with case plan activities
- Pre-dispositional investigations
- Recommend and supervise placements of unruly/delinquent youth
- Facilitate reunification efforts between youth and family
- Facilitate social service development for youth and family
- Complete required court reports and directives
- Supervise and case manage youth “at risk” for removal from the home
- Participate in identifying community service gaps and the development of collaborative relationships that proactively meets the needs of youth and family in the community.

New Programs for 2015 under the IV-E Division:

- Lighthouse at Paint Creek will be working out of the IV-E office to provide mental/behavioral health and alcohol and other drug services to court involved youth. Staff will be working with two different populations. A primary focus is providing

outpatient sex offender treatment to youth who have been adjudicated or identified as having inappropriate sexual behavior and involved with the court. The program will also provide treatment to youth exhibiting alcohol and other drug related problems. The program has been very successful and the court will continue the contract through 2016.

IV-E Program Services:

In 2015, IV-E staff provided case management and probation services to a total of one hundred fifty-two (152) youth.

- Forty-five (45) females
 - Forty-one (41) Caucasian
 - Four (4) African American
- One Hundred Seven (107) males
 - Ninety (90) Caucasian
 - Seventeen (17) African American

Of the one hundred fifty-two (152) youth, twenty-eight (28) had felony adjudications and were committed to the Ohio Department of Youth Services. Of those, twenty-eight (28) were male and there were no females. Many of these youth received suspended sentences in lieu of community control programming.

Sixty-one percent (61%) or ninety-three (93) of the youth working with the IV-E Division were involved with mental and behavioral health services.

Fifteen percent (15%) or twenty-three (23) youth were involved with Roweton Educational Campus.

The IV-E staff provided a team approach and worked with educations and behavioral health specialists in developing alternative education strategies that supported youth and encouraged academic achievement. These services included referrals to Roweton Educational Campus, Alternative School, Able, and participating in the development of a youth's Individual Education Plan and linkage to the Board of Developmental Disabilities when appropriate.

The IV-E Division manages the placement services for the court. The team evaluates each case and determines the least restrictive placement on each case. Placement could include placing the youth with a specified relative, respite, treatment facility, or foster care.

Court Placed twenty-three (23) juveniles in 2013, with twenty-one (21) of these youth entering court custody:

- Eight (8) females and fifteen (15) males.
 - Eighteen (18) were Caucasian.
 - Five (5) were African-American
- Six (6) were placed in foster care homes.
 - Two (2) females were placed at a residential facility after being unsuccessful in foster care.
- Fifteen youth (all males) youth were placed in either a corrections facility or in a behavioral health and alcohol/drug IV-E certified program.
 - Two (2) youth (all males) were placed at a Community Corrections Facility (DYS program). Both youth failed to successfully complete the terms of community based programming and one was sentenced to ODYS and another placed in an alternative residential placement.

Reunification Outcomes:

Of the twenty-one (21) youth in placement settings with juvenile court during 2015:

- Seven (33%) were reunified with a parent.
- Four (19%) were placed with relative/kinship care.
- One (5%) non-relative care placement.
- One (5%) aged out of care.
- Seven (33%) remain in court placements as of December 31, 2015.

IVE DEPARTMENT FINANCES

\$626,869.66 was expended in the IVE Department in 2015.

The Staff

THE STAFF OF THE PROBATE-JUVENILE DIVISIONS

- ❖ Judge J. Jeffrey Benson became the Ross County Probate/Juvenile Court Judge on February 9, 2015. Prior to his election to the bench, Judge Benson was a self-employed trial lawyer in Ross County for over thirty-three years. He received his Law Degree from Capital University in 1982 after graduating from Otterbein University in 1979. Judge Benson previously served three years as an Assistant Ross County Prosecuting Attorney, seven years as a member of the Chillicothe City Council, and eight years as a member of the Chillicothe City School District Board of Education. He is married to Shawn T. (Stephens) Benson and the proud father of four (4) boys.
- ❖ Magistrate Christine B. Hannan joined the Probate and Juvenile Court of Ross County in 1995 and retired in 2011. She was re-appointed as Magistrate. At the time of her initial appointment as Referee/Magistrate, Mrs. Hannan was an assistant prosecuting attorney for Ross County and a practicing lawyer with the law firm of Ward, Kellenberger, Nusbaum and Wissler. She received her Law Degree from Capital University School of Law in 1980 after graduating from Ball State University in 1977.
- ❖ Magistrate Steven E. Drotleff joined the Probate and Juvenile Court of Ross County in November of 2002. At the time of his appointment as Referee/Magistrate, Mr. Drotleff, was an assistant prosecuting attorney for Ross County and a practicing lawyer with the firm of Nusbaum, Ater, and Wissler. He received his Law Degree from Ohio State University College of Law in 1994 after graduating from Ohio University in 1991.

- ❖ Mediator, Donald E. Darby, joined the Probate and Juvenile Court in 1994. Mr. Darby started at with the Probate and Juvenile Court as a Youth Counselor. He was certified as a mediator in dispute resolution and domestic relations through the Supreme Court of Ohio and was appointed to the position of Mediator in 1999. He received a Bachelor of Arts Degree Cum Laude in Criminology from St. Leo College in 1994. He is federally trained Drug and Alcohol Program Administration and also a state certified guardianship investigator.
- ❖ Data Systems Analyst, Lisa M. Bair, joined the Probate and Juvenile Court in 1990. Mrs. Bair started with the Probate and Juvenile Court as a court reporter and was formally appointed to the position of Data Systems Analyst in 2000.
- ❖ Administrative Clerk/Mediation Secretary, Wendy McWhorter, joined the Probate and Juvenile Court in 1991. Mrs. McWhorter started with the Probate and Juvenile Court as a Deputy Clerk and was appointed to the position of Administrative Clerk/Mediation Secretary in 1999.
- ❖ General Deputy Clerk/Grant Administrator, Shelley Harper, joined the Probate and Juvenile Court in 1988. Ms. Harper started with the Probate and Juvenile Court as a Deputy Clerk and is currently working in the Juvenile Probation Department.
- ❖ Deputy Clerk, Billie Lytle, joined the Probate and Juvenile Court in 1992. Mrs. Lytle started with the Probate and Juvenile Court as a deputy clerk and is currently working as a Court Reporter.
- ❖ Chief Juvenile Clerk, Lois Smith, joined the Probate and Juvenile Court in 1993. Mrs. Smith started with the Probate and Juvenile Court as a deputy clerk in the Court's Juvenile Division. In 2005, Mrs. Smith was promoted to Chief Juvenile Clerk.
- ❖ Deputy Clerk, Penny Fannon, joined the Probate and Juvenile Court in 1995. Mrs. Fannon started with the Probate and Juvenile Court as a deputy clerk and is currently working in the Court's Probate Division.
- ❖ Juvenile Diversion Officer, Joseph Glandon, joined the Probate and Juvenile Court in 1996. He has a Bachelors Degree in Elementary Education from Ohio University. Mr. Glandon started with the Probate and Juvenile Court as a Probation Officer. He is currently still serving in that position.
- ❖ Archivist, Janet Ackley, joined the Probate and Juvenile Court in 1997. Mrs. Ackley started with the Probate and Juvenile Court as the Court's Archives and currently retains that position.
- ❖ Security Bailiff, Gary Steen, joined the Probate and Juvenile Court in 1998. Mr. Steen started with the Court as the security bailiff and continues to maintain that position. Prior to coming to work for the Probate and Juvenile Court, Mr. Steen was a Police Officer for the City of Chillicothe and retired in 1998.
- ❖ Deputy Clerk, Sara Mick, joined the Probate and Juvenile Court in 1998. Mrs. Mick started with the Probate and Juvenile Court as a deputy clerk. Mid-year, Mrs. Mick was moved to the Probate Division.

- ❖ Deputy Clerk, Tonya Wright, joined the Probate and Juvenile Court in 1998. Mrs. Wright started with the Probate and Juvenile Court as a deputy clerk and is currently working in the Court's Juvenile Division.
- ❖ Probation Officer, Brandy McCord, joined the Probate and Juvenile Court in 2000. Mrs. McCord joined the Probate and Juvenile Court as a social worker. In 2011, upon the retirement of Linda Young, Mrs. McCord was appointed as a juvenile probation officer. She holds a Bachelor of Arts in Criminology from Ohio University in 1998. She also received a Master of Arts in Sociology with a specialization in Crime and Deviance from Ohio University in 2003.
- ❖ Probation Officer/Guardianship Investigator, Matt Sutherland, joined the Probate and Juvenile Court in 2001. He has a Bachelors Degree in Criminal Justice and an Associates Degree in Law Enforcement Technology from Ohio University. Mr. Sutherland started with the Probate and Juvenile Court as a probation officer/guardianship investigator and currently retains that position. He is also a state certified guardianship investigator and was certified as a mediator in dispute resolution and domestic relations through the Supreme Court of Ohio.
- ❖ Deputy Clerk, Tammy Kellough, joined the Probate and Juvenile Court in 2001. Mrs. Kellough started with the Probate and Juvenile Court as a deputy clerk and continues to maintain her position working in the Court's Juvenile Division.
- ❖ Bailiff, Sally Nichols, joined the Probate and Juvenile Court in 2001. Mrs. Nichols started with the Probate and Juvenile Court as a bailiff and continues to retain that position.
- ❖ Deputy Clerk, Kristi Hay, joined the Probate and Juvenile Court in 2002. Miss Hay currently works as a Court Reporter.
- ❖ Title IV-E Program Administrator, Cheri Smitley, joined the Probate and Juvenile Court in 2005. She holds a Bachelor of Science Degree in Community Health Education, Master Degree in Management and Public Administration and is a Licensed Independent Chemical Dependency Counselor. Mrs. Smitley started with the Court as a Title II grant project director.
- ❖ Deputy Clerk, Gloria Hinty, joined the Probate and Juvenile Court in 2007. Mrs. Hinty works with the Probate and Juvenile Court as a deputy clerk in the Title IV-E Department.
- ❖ Reunification Probation Officer, Shanna Haybron, joined the Probate and Juvenile Court in 2007. Ms. Haybron started with the Probate and Juvenile Court as a reunification probation officer in the Title IV-E Department and maintains that position. She holds a Juvenile Sex Offender Counseling Certification from the University of Louisville.
- ❖ Deputy Clerk, Stephanie Wells, joined the Probate and Juvenile Court in 2007. Miss Wells works with the Probate and Juvenile Court as an intake clerk in the Court's front office.
- ❖ Reunification Probation Officer, Quincey Bailey, joined the Probate and Juvenile Court in 2010. He holds a Bachelor of Science Degree and a Juvenile Sex Offender Counseling Certification from the University of Louisville. Mr. Bailey started with the Probate and

Juvenile Court as a reunification probation officer in the Title IV-E Department and maintains that position.

- ❖ Deputy Clerk, Jennifer Hancock, joined the Probate and Juvenile Court in 2012. Mrs. Hancock started with the Probate and Juvenile Court as a deputy clerk in the Juvenile Division.
- ❖ Reunification Probation Officer, Jessica Richmond, joined the Probate and Juvenile Court in 2013. Ms. Richmond works with the Probate and Juvenile Court in the Title IV-E Department.
- ❖ Deputy Clerk, Toni DeTillian, joined the Probate and Juvenile Court in 2014. Mrs. DeTillian started with the Probate and Juvenile Court as a deputy clerk and is currently working as an intake clerk in the Court's front office.
- ❖ Deputy Clerk, Amanda Ackley, joined the Probate and Juvenile Court in 2014. Ms. Ackley started with the Probate and Juvenile Court as a deputy clerk and is currently working as an intake clerk in the Court's front office.

i

¹ Prepared by Lisa M. Bair, Data Systems Analyst, February 2016